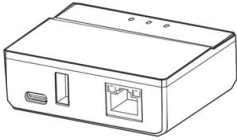
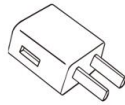


## Quick User Guide

### Standard accessories



1 USB port print server

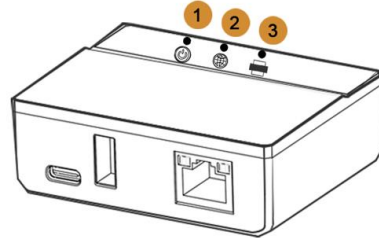


5V power adapter



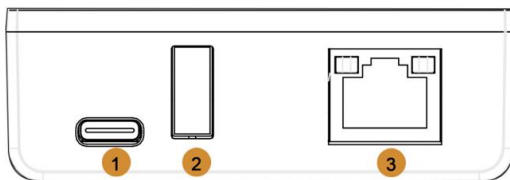
Type-c data cable

## 1 Status Indication



1. Power Status
2. Network Status
3. Printer Status

## Interface Description



1. Power Port
2. USB Port For Printer

3. RJ45 Ethernet Port

## 2 Configuration APP Download & WiFi Configure

### 1. Network Configuration App Download Link:

<https://loyalty-secutech.com/print-server-data-download/>

### 2. Power on the print server using the power adapter provided by LOYALTY-SECU.

3. On your smartphone, download the Print Server Network Configuration app from our official website, Google Play, or the App Store. App Name: "Print Assistant"

4. Enable Bluetooth on your smartphone. Install and open the "Print Assistant" app.

5. In the configuration app, click "Find Device" (the device name will be the device code, e.g., SW123456789).

6. Select your WiFi network (supports 2.4GHz/5GHz), enter the WiFi password, and the device will automatically obtain a dynamic IP address.

7. Once connected, the configuration app will display the successful connection and the assigned IP address.

## 3 PC Print Assistant Download



1. Scan the QR code or visit the following link to download the "PC Print Assistant" and the user manual.

2. Download link: <https://loyalty-secutech.com/print-server-data-download/>

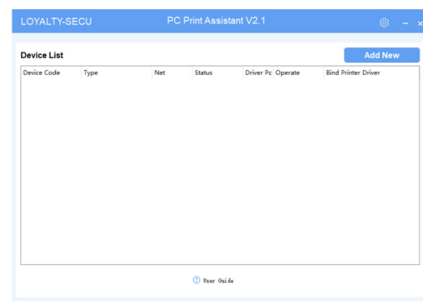
## 4 PC Print Assistant Configure

1. Power on the print server and the USB printer.

2. Connect the print server to the printer using a USB cable.

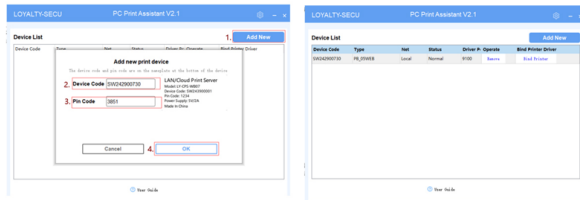
3. Ensure that the print server is connected to the internet.

4. Open the PC Print Assistant.



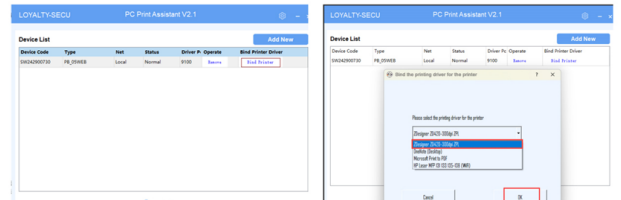
### 5 Add A Print Server in PC

1. Click the "Add New" button to add the print server.
2. Input the Device Code (located on the device label).
3. Input the Pin Code (located on the device label).
4. Click the "OK" button.
5. The print server will be successfully listed in the device list.



### 6 Bind the Printer (Windows System) in PC

1. Click the "Bind Printer" button.
2. Select the printer driver for the printer.
3. Click the "OK" button.
4. Now, you can print via the LAN network or Cloud Server.



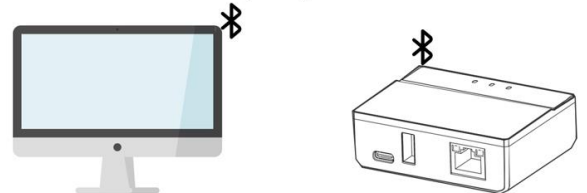
### 7 APP Download (Android)



Download the "PrinterShare" or "PrintHand" app from Google Play.

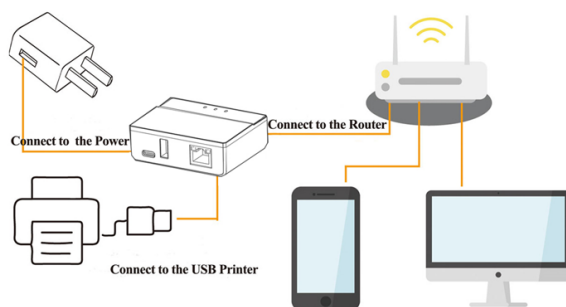
### 8 Bluetooth Printing in PC

To use Bluetooth Print Server printing:



1. Connect the printer to the USB port of the print server.
2. Turn on Bluetooth on your computer and pair it with the Bluetooth print server (the Device Name will be the Device Code, e.g., SW123456789; no PIN code is required).
3. Obtain the Bluetooth networking COM number of the print server and assign it to the USB printer.

### 9 Workflow



### 10 Setting Demo Video



Demo video: <https://loyalty-secutech.com/video/>

Making Print Sharing Easy and Free!